



2024 PAVEMENT MANAGEMENT PROGRAM

SE 56th ST

(WEATHER DEPENDENT)

PLAN AHEAD

BEGINNING (5/9)

SE 56th St was unable to receive an asphalt overlay maintenance treatment in 2023 due to weather and contractor delays (see map on back for project limits). This work is now scheduled and will consist of utility adjustments, asphalt base repairs, and removing and replacing up to 2 inches of existing asphalt in a new overlay. The project will be performed in four phases on the following dates:

- Utility Repair (2 days)
 - Starts May 6th, Road OPEN with flagging operations
- Preparatory Work (1 day)
 - Starts May 13th, WB Closure
- Asphalt Overlay (1 day)
 - Starts May 14th, WB Closure
 - Plan for delays getting to or from your destination in the workzone.
- Utility Raise to Grade (1 - 3 Days)
 - Starts May 20th, road OPEN with flagging operations

While new asphalt is being placed, there will be delays crossing the roadway section that is being paved. There may be delays of up to 20 minutes to enter/exit the project workzone in order to compact the asphalt material and make it safe to cross without damage to the new material or vehicle.



LOCAL ACCESS

While the preparatory and overlay work is performed, westbound traffic flow will be restricted. All traffic must travel eastbound from East Lake Sammamish PKWY to their destination within the project limits.

Business and residential access will be open for those locations that do not have alternative access points. Expect delays to enter/exit these access points during May 14th while asphalt material is being placed.

YOU SHOULD KNOW

If you need special accommodation, please call 425-837-3470 or the contact on the bottom of this flyer. We can provide access in some cases and/or assist you with your needs. Please don't hesitate to call.

While placing new asphalt material on the roadway, the sidewalks will be the only access points. The overlay process uses hot material that can damage vehicles, clothing, and may stick to your pets paws. Please obey the traffic signs and flagging personnel.

This work is being performed under the City of Issaquah's Capital Improvement Project TR030 – Pavement Management Program Thank you for your continued support to maintain our pavement and concrete infrastructure!

PARKING

At least 24 hours before work begins, crews will place "No Parking" signs around the affected areas. Please remove all vehicles parked along the street prior to 7 a.m. each work day.

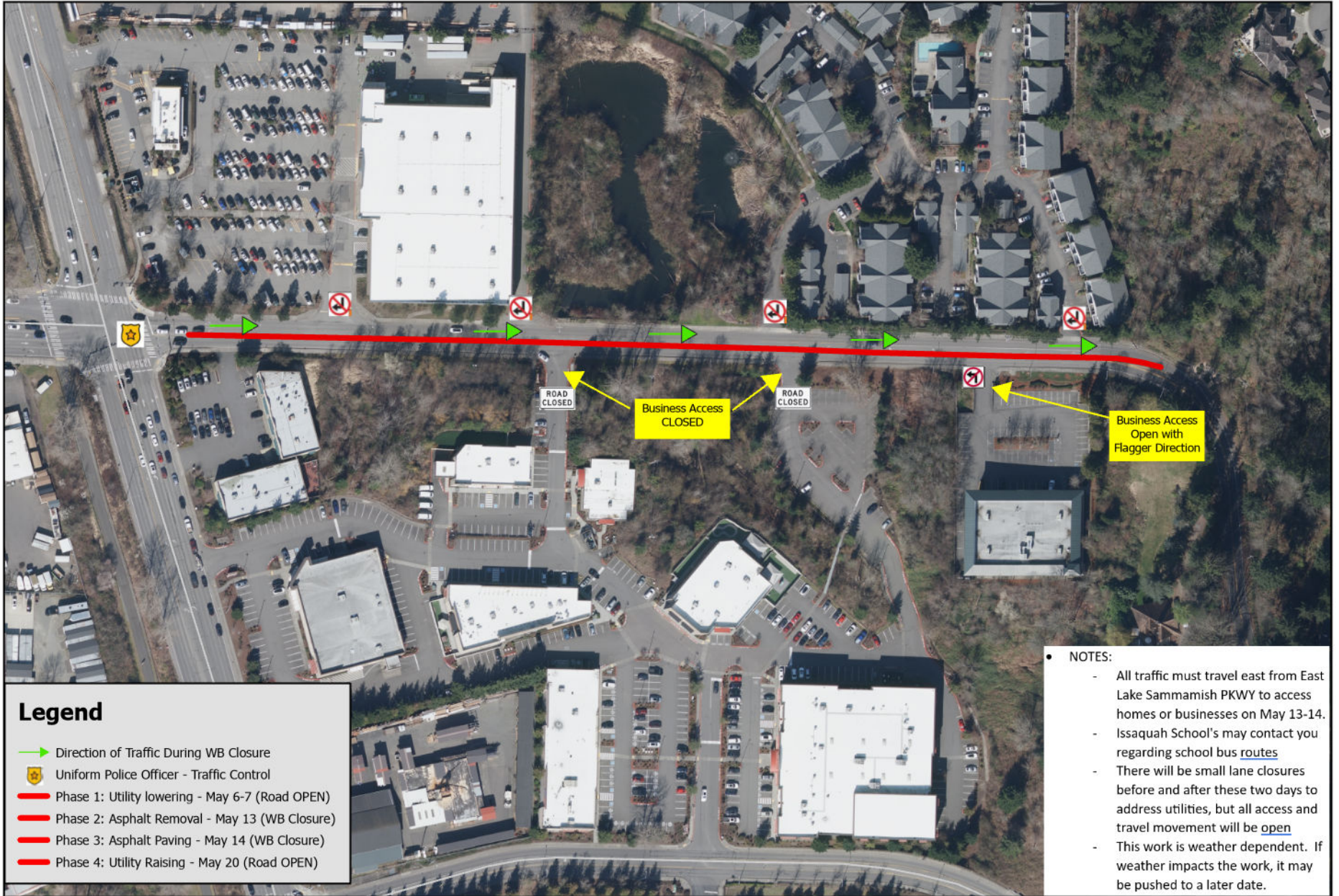
We will make every attempt to contact the vehicle owner prior to towing.



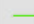

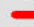

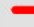
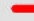
FAQ

Working hours of operation are from 7 a.m. to 6 p.m.

The project has been phased in a way that reduces impacts to residents and businesses as much as possible. **This project is weather dependent. If the new asphalt cannot be replaced during this time, it will be rescheduled soon to occur once conditions allow.**



Legend

-  Direction of Traffic During WB Closure
-  Uniform Police Officer - Traffic Control
-  Phase 1: Utility lowering - May 6-7 (Road OPEN)
-  Phase 2: Asphalt Removal - May 13 (WB Closure)
-  Phase 3: Asphalt Paving - May 14 (WB Closure)
-  Phase 4: Utility Raising - May 20 (Road OPEN)

- **NOTES:**
 - All traffic must travel east from East Lake Sammamish PKWY to access homes or businesses on May 13-14.
 - Issaquah School's may contact you regarding school bus routes
 - There will be small lane closures before and after these two days to address utilities, but all access and travel movement will be open
 - This work is weather dependent. If weather impacts the work, it may be pushed to a later date.

